



# CYCLONE 12,000 CFM DUST COLLECTOR

## **Cyclone 12,000 CFM Dust Collector**

Manufactured by Industrial Vacuum Equipment Corporation.

This state-of-the-art cartridge pulse jet dust collector provides quality, dependability and service at a competitive price.

- **AIR VOLUME**

12,000 ACFM at - 10" W.C.

- **POWER SOURCE**

40 HP, 460 Volt, 3 Phase TEFC motor with all controls in a NEMA enclosure

- **FRAME**

Extreme heavy duty steel frame with fork pockets & lifting eyes

- **FILTRATION**

24 cartridge filters with pulse jet style cleaning system with an air to cloth ratio of 2.4 to 1

## **STANDARD EQUIPMENT**

- Two drum covers
- Two 16" inlet connections
- 4 bolt on legs
- Inlet air regulator
- Differential pressure gauge

***Industrial Vacuum Manufactures Dust Collection Systems From 6,000 cfm - 60,000 cfm.***

***Please contact us for more information on a dust collection system that will meet your requirements.***



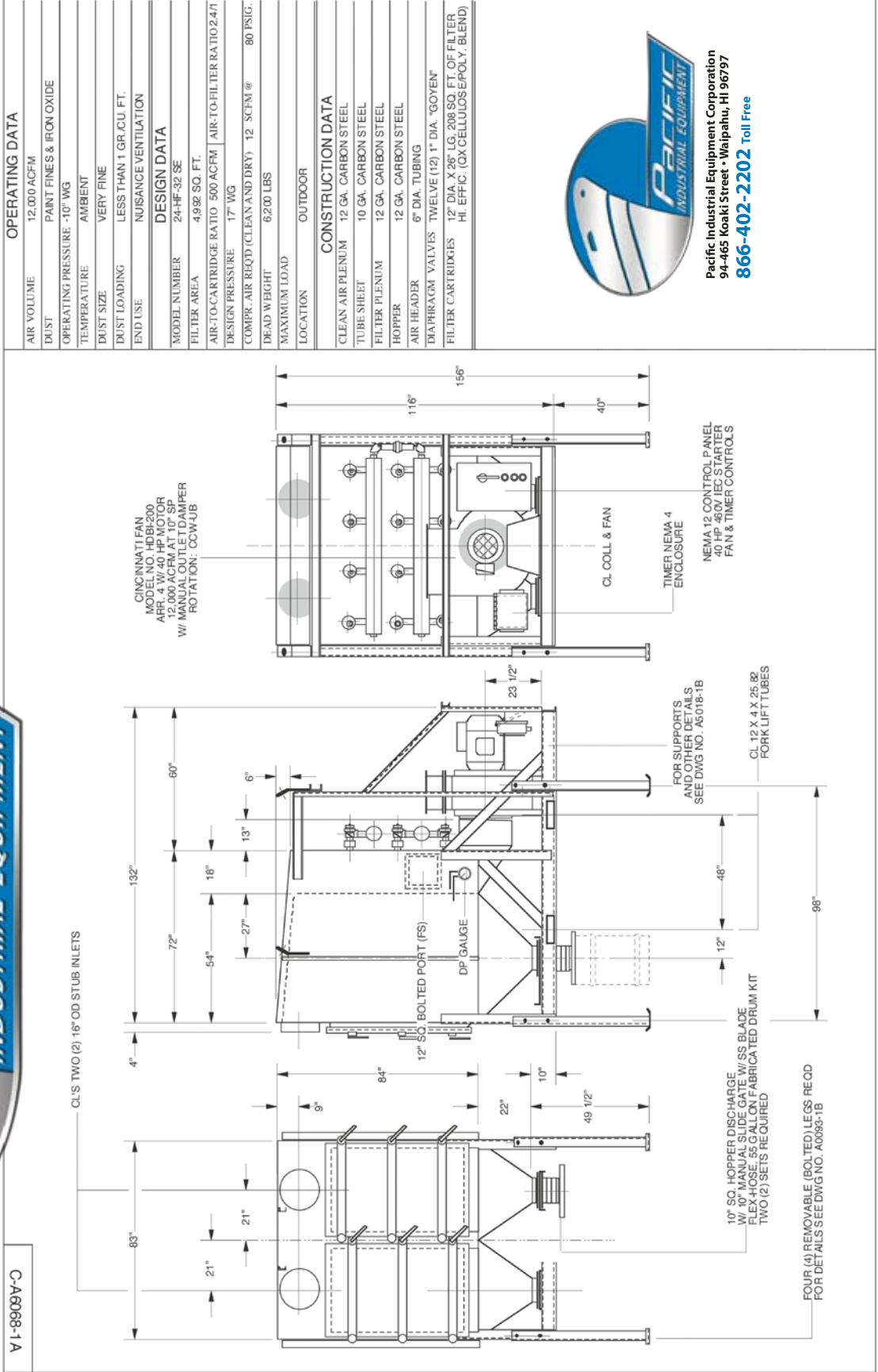
*Dimensional Drawing On Reverse Side*

**Pacific Industrial Equipment Corporation**  
94-465 Koaki Street • Waipahu, HI 96797  
**866-402-2202 Toll Free**

# CYCLONE 12,000 CFM DUST COLLECTOR



VI-89068-1A



Pacific Industrial Equipment Corporation  
94-465 Koaki Street • Waipahu, HI 96797  
866-402-2202 Toll Free